

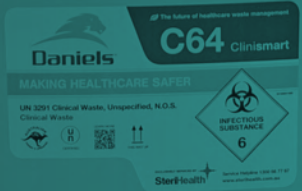
DANIELS HEALTH

# Logistics & Storage Solutions



MAKING HEALTHCARE SAFER  
SOINS DE SANTÉ PLUS SÉCURITAIRES

## BENCH & TROLLEY MOUNTING SOLUTIONS



# Bench & Trolley Mounting Solutions

Seamlessly integrated with your existing clinical equipment

Placement and accessibility are two strong factors in averting sharps injuries; we have worked with clinicians and facilities around the world to create a suite of mounting accessories that will integrate seamlessly into any healthcare environment. Whether facilitating bench mounting of sharps collectors, easy-mount cradles for mobile ease, or Daniels trolley mounts for point-of-use waste segregation, our accessory range facilitates risk-free positioning and movement of all Daniels collectors.

## Bench Mounting



**Bench Bracket – S14** | Provides secure stabilisation of S14 collectors on a benchtop.

Product Code : 4010000000

Dimensions : 4.6”(H) x 5.4” (W) x 5.3” (D)

Compatibility : S14 Sharpsmart Regular and Access Plus collectors.



**Bench Bracket – S22** | Provides secure stabilisation of S22 collectors on a benchtop.

Product Code : 4010100000

Dimensions : 9.7” (H) x 5.4” (W) x 5.3” (D)

Compatibility : S22 Sharpsmart Regular and Access Plus collectors.



**S2 Bench/Wall Bracket** | Stabilises S2 disposable collectors upright on bench tops.

Product Code : 1025000000

Dimensions : 3.5” (H) x 2.1” (W) x 3.6” (D)

Compatibility : S2 Container range.

## Trolley Mounting



**Standard Cradle – 15mm Mount** | Easy to install design, simply hooks over trolley rail enabling upright mounting of Sharpsmart collectors in an inward or outward facing position.

Product Code : 1028000000

Dimensions : 6.8” (H) x 14.4” (W) x 8.7” (D)

Compatibility : S14, S22 Regular and Access Plus collectors.

Features : Rugged, non-rust stainless steel construction.

### Did you know...

All Daniels Accessories can be viewed on [www.danielshealth.ca](http://www.danielshealth.ca) with an easy cart option to submit an online quote request.





# Trolley Mounting



**Standard Cradle – 25mm Mount** | designed to hook over the top of a trolley or crash cart, where the rail exceeds 0.5" in diameter.  
Product Code : 1068000000  
Dimensions : 6.8" (H) x 14.1" (W) x 9.1" (D)  
Compatibility : S14, S22 Regular and Access Plus collectors.  
Features : Rugged, non-rust stainless steel construction.



**Mounted Cradle** | Identical concept and design to the Standard Cradle but with additional mounting plate to attach cradle to a wide variety of trolley designs.  
Product Code : 1027000000  
Dimensions : 6.8" (H) x 14.4" (W) x 9.7" (D)  
Compatibility : S14, S22 Regular and Access Plus collectors.  
Features : Rugged, non-rust stainless steel construction.



**Locking Mountsmart** | Designed for versatile inward or outward mounting of Sharpsmart collectors to allow 90 degree lid opening.  
Product Code : 4000100000  
Dimensions : 4.6" (H) x 10.2" (W) x 1.2" (D)  
Compatibility : S14, S22, S32 Regular and Access Plus collectors.  
Features : Manufactured with stainless steel pins and a chrome plated mild steel lock.



**Accessmart Side Bracket** | Enables dual mounting of an S14 or S22 collector to the side of an Accessmart trolley.  
Product Code : 4001916000  
Dimensions : 4.6" (H) x 10.2" (W) x 1.2" (D)  
Compatibility : S14, S22 Regular and Access Plus collectors.

With 32 years experience leading innovative change in the management of healthcare waste across six countries, at Daniels

**WE THINK DIFFERENTLY.**

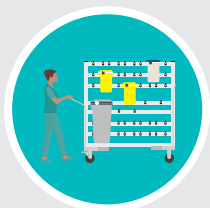


MAKING HEALTHCARE SAFER  
SOINS DE SANTÉ PLUS SÉCURITAIRES



We have come to understand that safety, segregation and the effective cost management of healthcare waste is driven and directly influenced from within the four walls of a clinical facility... so why not start there?

Daniels have invested years of microbiological R&D and clinical research into creating products that amplify the safety and efficiencies of a healthcare environment. We don't just deal with a collector, we look at how it's mounted and secured, how it positions waste for optimal segregation and minimises footprint in space-constrained areas; we look at how it moves through a facility in a way that is almost invisible,...



### MOVEMENT

**Challenge** - Pressure on service elevators shared by patients and hospital staff.

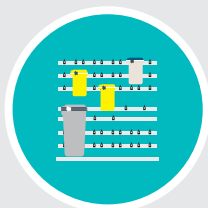
**Solution** - By transporting 16 collectors on a Daniels Internal Delivery Cart, you can dramatically reduce labour time and burden on elevators.



### SEGREGATION

**Challenge** - Achieving effective segregation within a patient room.

**Solution** - Daniels Accessmart trolley enables co-mounting of a Sharpsmart and Medismart collector to achieve point-of-use segregation.



### WALL MOUNTING

**Challenge** - Small utility room with limited floorspace.

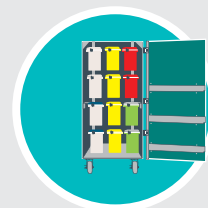
**Solution** - Install Wallsmart to efficiently store multiple collectors.



### TROLLEY MOUNTING

**Challenge** - Safe effective disposal of medications in a patient environment.

**Solution** - Daniels brackets can be mounted directly onto a hospital's med-cart to safely move Pharmasmart collectors from room to room.



### DOCK STORAGE

**Challenge** - Double-stacking biomedical waste bins is an occupational hazard and takes up significant space in a loading dock.

**Solution** - Daniels transporters store up to 45 collectors in a secure, dust-free environment with minimal footprint required.

CAN181014