

DANIELS HEALTH

# Logistics & Storage Solutions



MAKING HEALTHCARE SAFER  
SOINS DE SANTÉ PLUS SÉCURITAIRES



MOBILE  
CARTS &  
FLOORSTANDS

# Daniels Mobile Carts & Floorstands

Point-of-use ease, infection-prevention designs, safer for staff and patients.

Daniels' range of mobile carts and moveable floorstands ensure that containment systems can be positioned at point of waste generation. The flexible positioning afforded by Daniels product range ensures that risk is minimised, segregation potential is maximised and staff time and labour is dramatically reduced. All Daniels mobile carts and floorstands are engineered with a dovetail design that interlocks with the rear recess of each Daniels collector, thereby ensuring stability and flexible interchangeability between different accessories and work environments.



**Cartsmart 1** | Enables convenient, mobile, off the floor mounting of Sharpsmart collectors.

**Product Code** : 6000100000

**Dimensions** : 32.9" (H) x 17.1" (W) x 17.0" (D)

**Compatibility** : All Sharpsmart Regular and Access Plus sizes.

**Features** : Plastic construction is lightweight, has long-lasting durability and is easy to clean.



**MRI Cartsmart** | Designed for use in MRI suites and any applications which require non-magnetised equipment. This product has an MR Conditional Rating.

**Product Code** : 6006500000

**Dimensions** : 32.9" (H) x 17.1" (W) x 17.0" (D)

**Compatibility** : All Sharpsmart Regular and Access Plus sizes.

**Features** : Tested in MRI environments, the non-magnetic metal construction passes the non-ferromagnetic requirements.



**64 Series Accessmart** | Enabling hands-free disposal of sharps or soft waste, the Accessmart can also be fitted with a side bracket to dual mount S14 and S22 collectors.

**Product Code** : 6005500000

**Dimensions** : 36.3" (H) x 18.8" (W) x 19.7" (D)

**Compatibility** : All Daniels 64-series collectors.

**Features** : Foot-operated pedal and brake-engaging wheels enable hands-free opening and closing of collectors.



**64 Series Accessmart – Soft Close Version** | Designed for optimised ward movement with an odor reduction soft close mechanism.

**Product Code** : 6006500000

**Dimensions** : 36.3" (H) x 18.8" (W) x 19.7" (D)

**Compatibility** : All Daniels 64-series collectors.

**Features** : Foot-operated pedal and brake-engaging wheels enable hands-free opening and closing of collectors.



### Did you know...

All Daniels Accessories can be viewed on [www.danielshealth.ca](http://www.danielshealth.ca) with an easy cart option to submit an online quote request.



**S-Series Floorstand** | Designed for stable floor mounting of S-Series Sharpsmart collectors to prevent tipping or spillage.

▶ **Product Code** : 5806000000

**Dimensions** : 20.2" (H) x 15.0" (W) x 12.0" (D)

**Compatibility**: S14, S22, S32 Regular and Access Plus collectors.

**Features** : Stainless steel and plastic construction is tough and easy to clean.



**S64 Floorstand** | Designed for stable floor mounting of 64-Series collectors, to prevent tipping or spillage.

▶ **Product Code** : 6424007000

**Dimensions** : 25.3" (H) x 12.0" (W) x 14.6" (D)

**Compatibility**: All 64-Series collectors.

**Features** : Stainless steel and plastic construction is tough and easy to clean.



**Static Floorstand – 64 series** | Elevates 64-Series collectors off the ground in a fixed position.

▶ **Product Code** : 5811000000

**Dimensions** : 30.8" (H) x 16.4" (W) x 18.8" (D)

**Features** : Foot pedal provides hands-free operation.



**Dynamic Floorstand – 64 series** | Elevates 64-Series collectors off the ground, handle and wheels provide short distance mobility.

▶ **Product Code** : 5810906000

**Dimensions** : 36.4" (H) x 16.4" (W) x 21.7" (D)

**Features** : Foot pedal provides hands-free operation.



▶ **S64 Dynamic Footpedal Kit** | This kit transforms the Static Floor Stand into the Dynamic Floor Stand for hands-free operation.

**Product Code** : 5810806000

**Features** : Consists of two casters, a handle and an assembly instruction sheet.

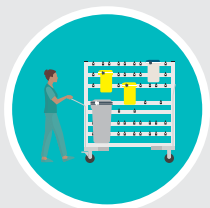
With 32 years experience leading innovative change in the management of healthcare waste across six countries, at Daniels

**WE THINK DIFFERENTLY.**



We have come to understand that safety, segregation and the effective cost management of healthcare waste is driven and directly influenced from within the four walls of a clinical facility... so why not start there?

Daniels have invested years of microbiological R&D and clinical research into creating products that amplify the safety and efficiencies of a healthcare environment. We don't just deal with a collector, we look at how it's mounted and secured, how it positions waste for optimal segregation and minimises footprint in space-constrained areas; we look at how it moves through a facility in a way that is almost invisible,...



### MOVEMENT

**Challenge** - Pressure on service elevators shared by patients and hospital staff.

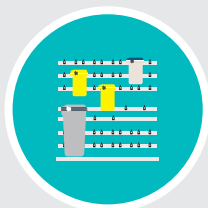
**Solution** - By transporting 16 collectors on a Daniels Internal Delivery Cart, you can dramatically reduce labour time and burden on elevators.



### SEGREGATION

**Challenge** - Achieving effective segregation within a patient room.

**Solution** - Daniels Accessmart trolley enables co-mounting of a Sharpsmart and Medismart collector to achieve point-of-use segregation.



### WALL MOUNTING

**Challenge** - Small utility room with limited floorspace.

**Solution** - Install Wallsmart to efficiently store multiple collectors.



### TROLLEY MOUNTING

**Challenge** - Safe effective disposal of medications in a patient environment.

**Solution** - Daniels brackets can be mounted directly onto a hospitals' med-cart to safely move Pharmasmart collectors from room to room.



### DOCK STORAGE

**Challenge** - Double-stacking biomedical waste bins is an occupational hazard and takes up significant space in a loading dock.

**Solution** - Daniels transporters store up to 45 collectors in a secure, dust-free environment with minimal footprint required.

